



OPERATING SUMMARY 2017



2.3 Mt
of waste treated
by Syctom in 2017



+1.9%
growth in selective
collection between
2016 and 2017



2,103 t
of biowaste treated



8 SER
priorities deployed



**40 eco-
facilitators**
on the ground
(January 2018)



€1 M
allocated to the
international solidarity
programme



57 projects
received for the 2017
Zero Waste Design
Competition



2,672
visitors
to the centres



I had the honour of being elected president of Syctom on 20 October 2017, thus succeeding Hervé Marseille. In keeping with his accomplishments, I shall strive to guarantee the Syndicate its rightful place in the new metropolitan territorial organisation, alongside other syndicates in the Paris region, with which we will reinforce the synergies promoted in recent years.

Unanimously elected by the members of the Syndicate Committee, who rose above their political and territorial differences, I am well aware of the heavy responsibility that rests upon me. It is my duty to ensure that Syctom, guided

by the same public service ethos, continues to perform the waste treatment mission which is now delegated to it by the territorial public establishments.

Our increasingly ambitious goals of waste recovery will also lead us to pursue the investment policy we have initiated. In this regard, 2017 was marked by many advances: our construction projects in Ivry/Paris XIII and in the Batignolles district in Paris XVII, as well as our modernisation projects in Saint-Ouen-sur-Seine and Romainville/Bobigny crossed important milestones. More broadly, our programme to improve our equipment proves how important it is for us to deploy new industrial strategies. I am pleased that these strategies, ever more innovative, are also part of a reinvigorated partnership dynamic, which brings us closer to other major urban syndicates in the Paris region.

The efforts we made in 2017 to improve the performance of our processes was also accompanied by the structuring of our CSR (corporate social responsibility) approach: the safety aspect that it includes will lead us in the coming months to develop a culture of safety and security in all our facilities.

Lastly, I am delighted to see the openness shown by our Syndicate in 2017: our teams participated actively in external events, at the metropolitan and European Union level, but also internationally, through the deployment of international solidarity and cooperation initiatives.

Our voice, widely recognised as that of Europe's leading public operator in waste treatment, is garnering interest and attention at all levels, at par with our expertise and experience. I promise that we will leverage our strengths in future, as in 2017, to serve the residents of the Paris region and, more broadly, to promote the ecological transition.

Jacques GAUTIER

Mayor of Garches

Vice-President of Paris Ouest La Défense

President of Syctom, the metropolitan agency for household waste

BREAKDOWN OF TONNAGE IN DIFFERENT TREATMENT CENTRES IN 2017

Waste treated by Sycotom

2,313,363 t
2,287,219 t in 2016

INCLUDING TONNAGE OF HOUSEHOLD WASTE
1,881,817 t
1,890,930 t in 2016

Total tonnage of household waste in Sycotom's territory

2,433,632 t
2,406,023 t in 2016



184,600 t
181,110 t in 2016

SORTING - RECYCLING OF SELECTIVE COLLECTION (EXCLUDING SELECTIVE COLLECTION FROM SITRU)



214,971 t
200,356 t in 2016

SORTING OF BULKY OBJECTS including construction BO



29,830 t
13,764 t in 2016

WASTE RECEPTION CENTRES including as-dug gravel from the Romainville waste reception centre sorted at Bonneuil-sur-Marne **3,946 t**



1,441,722 t
1,464,127 t in 2016

HOUSEHOLD WASTE WASTE INCINERATION PLANTS (HWIP) DIRECT CONTRIBUTIONS including downgraded waste from SC **407 t**
413 t in 2016



392,357 t
372,987 t in 2016

ROMAINVILLE TRANSFERS DIRECT CONTRIBUTIONS including downgraded waste **360 t**
293 t in 2016



35,959 t
42,702 t in 2016

DUMPING IN NHWSF including downgraded waste **31 t**
50 t in 2016



11,624 t
11,113 t in 2016

DUMPING IN BACKUP CENTRES



2,145 t
1,059 t in 2016

BIOWASTE including tonnage collected by Sycotom in experimentation territories **82 t**

Glass
120,269 t
118,804 t in 2016

NOT PASSING THROUGH SYCTOM **120,269 t**
118,804 t in 2016

PASSING THROUGH SYCTOM **0 t**
0 t in 2016

Waste from non-dumping municipalities
0 t
0 t in 2016

NOT PASSING THROUGH SYCTOM

SYCTOM CENTRES **161,406 t**
157,564 t in 2016

EXTERNAL CENTRES **23,194 t**
23,546 t in 2016

SYCTOM CENTRES **0 t**
0 t in 2016

EXTERNAL CENTRES **218,913 t**
204,796 t in 2016

SYCTOM WASTE RECEPTION CENTRES **25,883 t**
9,324 t in 2016

SYCTOM HWIP **1,369,379 t**
1,379,882 t in 2016

EXTERNAL HWIP **63,428 t**
79,488 t in 2016

NHWSF **8,915 t**
4,756 t in 2016

SYCTOM HWIP **315,227 t**
291,513 t in 2016

EXTERNAL HWIP **38,162 t**
51,430 t in 2016

NHWSF **39,029 t**
29,480 t in 2016

DIRECT CONTRIBUTIONS **35,928 t**
42,652 t in 2016
downgraded waste **31 t**
50 t in 2016

SYCTOM HWIP **1,725 t**
1,352 t in 2016

EXTERNAL HWIP **8,332 t**
2,905 t in 2016

NHWSF **1,567 t**
6,856 t in 2016

COMPOSTING OR METHANISATION **2,103 t**
1,059 t in 2016
downgraded waste **42 t**
0 t in 2016

EXTERNAL HWIP **0 t**
0 t in 2016

NHWSF **0 t**
0 t in 2016

RECYCLING (INCLUDING DOWNSTREAM STOCK)	133,975 t 132,230 t in 2016
STOCK VARIATION UPSTREAM	70 t -147 t in 2016
INCINERATED REJECTS	46,051 t 43,322 t in 2016
REJECTS PUT IN NHWSF	4,504 t 5,705 t in 2016

RECOVERY	133,959 t 125,151 t in 2016
<i>including recovery in heating</i>	10,459 t 0 t in 2016
INCINERATED REJECTS	22,781 t 15,604 t in 2016
REJECTS PUT IN NHWSF	57,969 t 64,042 t in 2016

RECOVERY	19,227 t 8,068 t in 2016
INCINERATED REJECTS	1,357 t 1,255 t in 2016
REJECTS PUT IN NHWSF	5,300 t 0 t in 2016

CLINKERS EVACUATED	308,947 t 321,551 t in 2016
FERROUS SCRAP SOLD	36,858 t 34,665 t in 2016
NON-FERROUS SCRAP SOLD	2,829 t 2,832 t in 2016
REFIOM	44,849 t 43,390 t in 2016
ELECTRICITY SOLD	138,878 MWh 146,418 MWh in 2016
STEAM (OTHER)	1,836 MWh 41,300 MWh in 2016
STEAM SOLD (CPCU)	2,637,654 MWh 2,666,763 MWh in 2016

ORGANIC AMENDMENT (DIGESTATE AND/OR COMPOST)	1766 t 944 t in 2016
INCINERATED REJECTS	97 t 61 t in 2016

RECYCLING	120,269 t 118,804 t in 2016
-----------	--------------------------------



Total materials recovery
747,370 t
 744,245 t in 2016
 I.E.
30.8% of waste
 INCLUDING
 CLINKERS
 FERROUS X NON-FERROUS
308,947 t
 321,551 t in 2016



Total energy recovery
 HOUSEHOLD WASTE + DOWNGRADED WASTE + SORTING REJECTS
1,876,996 t
 1,866,850 t in 2016
 I.E.
62.9% of waste*

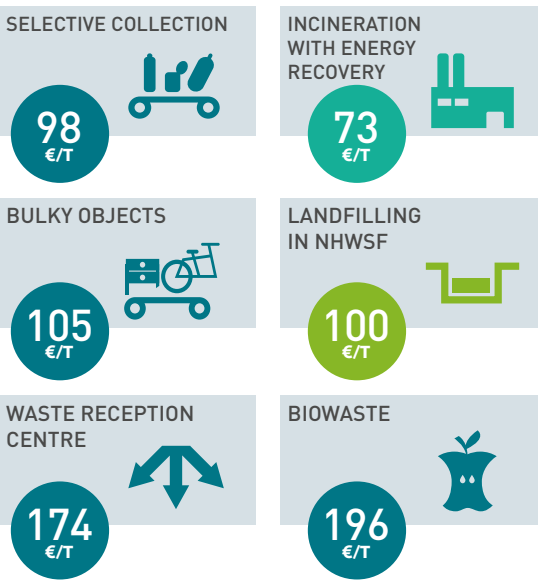


Total Sycotm landfilling in NHWSF
 HOUSEHOLD WASTE + DOWNGRADED WASTE
85,470 t
 83,795 t in 2016
 HOUSEHOLD WASTE + DOWNGRADED WASTE + SORTING REJECTS
153,243 t
 153,542 t in 2016
 I.E.
6.3% of waste

*Clinkers, ferrous and non-ferrous are subjected to materials recovery. To avoid a double count, this percentage was calculated by subtracting these materials from the total energy recovery tonnage.
 All percentages are calculated including glass.

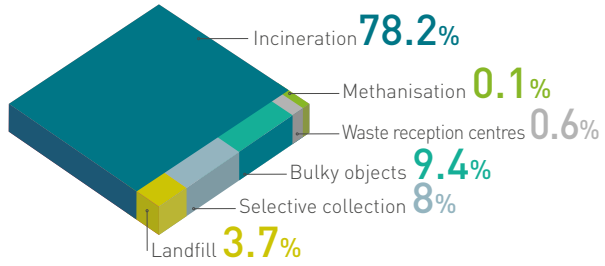
NET OVERALL COST OF TREATMENT

per tonne (including Sycotm's support policy)



BREAKDOWN OF TONNAGE BY TREATMENT METHOD

tonnages entering directly into treatment channels

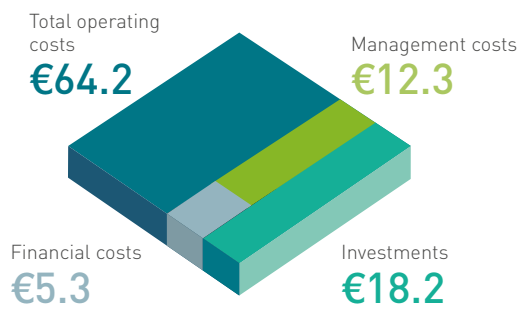


FEEES AND GRANTS PAID



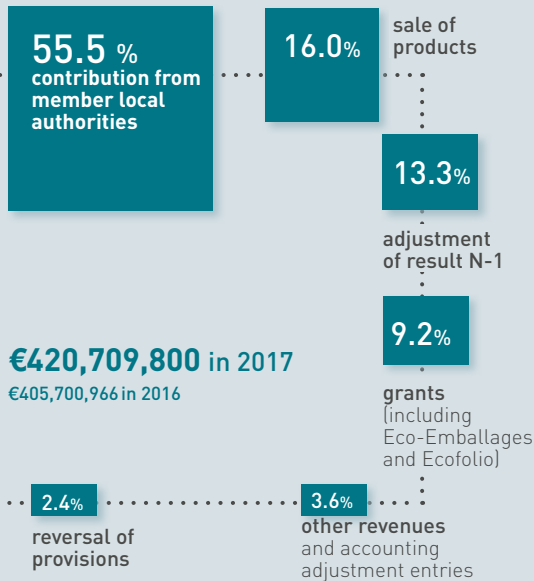
USE OF THE FEES

for €100

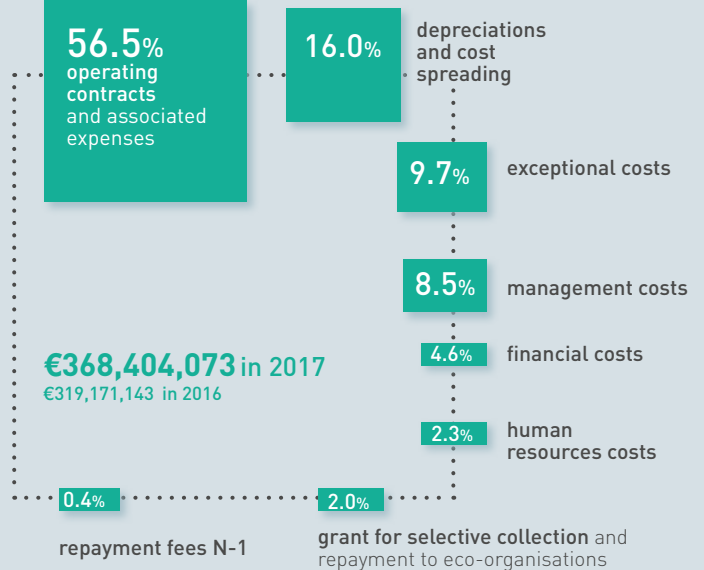


OPERATIONS

Revenue

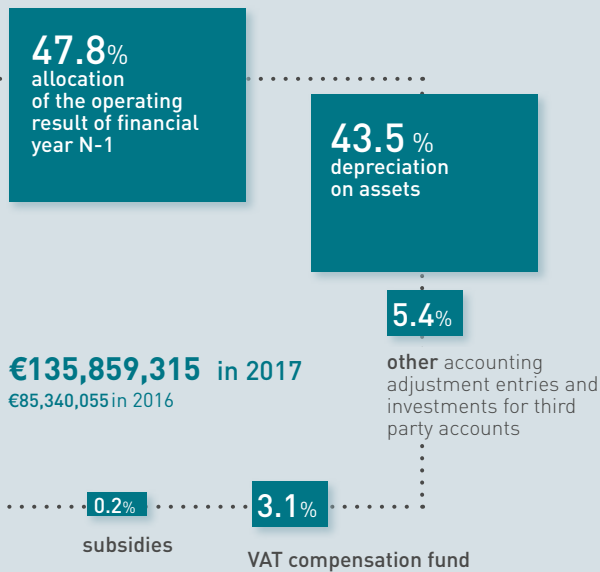


Expenditure

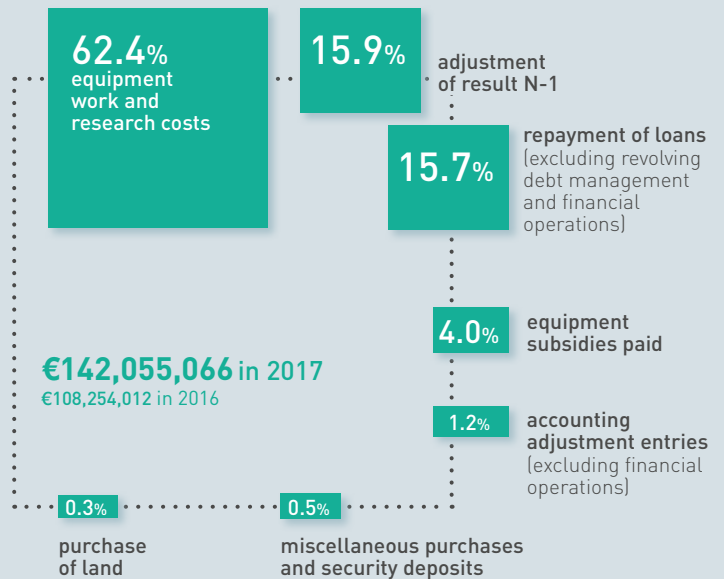


INVESTMENT

Revenue



Expenditure



PRICING UNCHANGED SINCE 2017

A confirmed drop in pricing

-3.5%
decrease in fees for household waste and bulky objects between 2015 and 2017

5.6 €/pers.
compared to 6.4 €/pers. in 2015

-12%
decrease in the population share of fees between 2015 and 2017

Pricing to promote recycling

HOUSEHOLD WASTE AND BULKY OBJECTS
94 €/t

SELECTIVE COLLECTION
5 to 30 €/t
depending on the tonnage collected (free for tonnages higher than those recorded in 2015)

Subsidies to galvanise the residents

SELECTIVE COLLECTION
for tonnages greater than those recorded in 2015
20 to 50 €/t
The bonus is applied depending on the sorting performance

FOOD WASTE
30 €/t
for an experimental period of 3 years (2016-2018) or collection undertaken by Sycotom